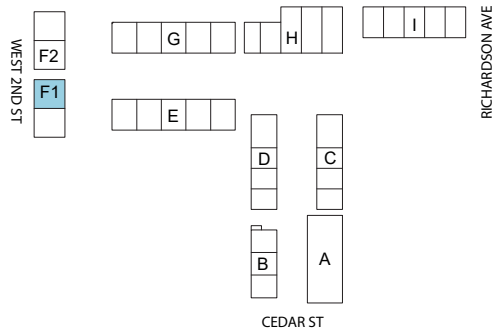


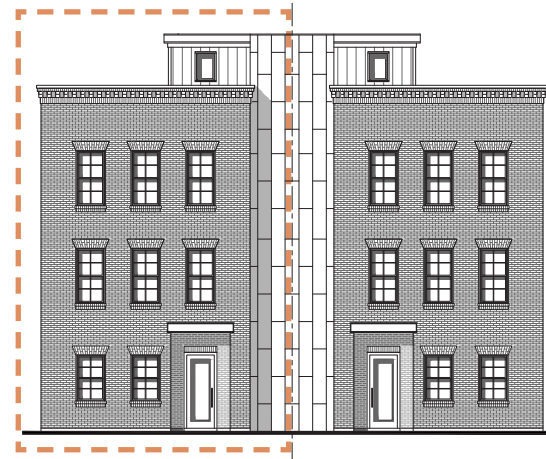
# BONAIRE PARK

208 South Cedar Street | Summerville, SC 29483

Unit F1-A | 3 Bed-2 Bath-2 Half Bath



SITE - KEY PLAN



BUILDING F1 - ELEVATION

Heated Area - 2873 sqft

Garage Area - 430 sqft

Roof Deck Area - 710 sqft

Bonaire Park reserves the right to make modifications and changes to the information contained herein. Price and availability subject to change. Renderings, photos and sketches are representational and may not be totally accurate. Dimensions, sizes, specifications, layouts, views and materials are approximate and subject to change without notice.

[Bonaire-park.com](http://Bonaire-park.com)

© South Cedar Development Associates, LLC 2025

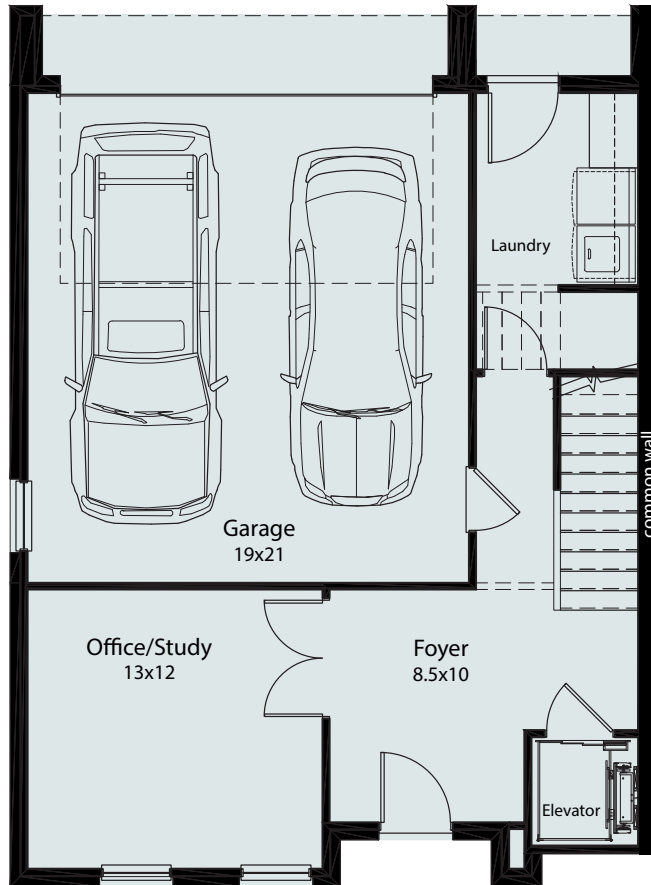
An affiliate of JJR Development, LLC

All Rights Reserved

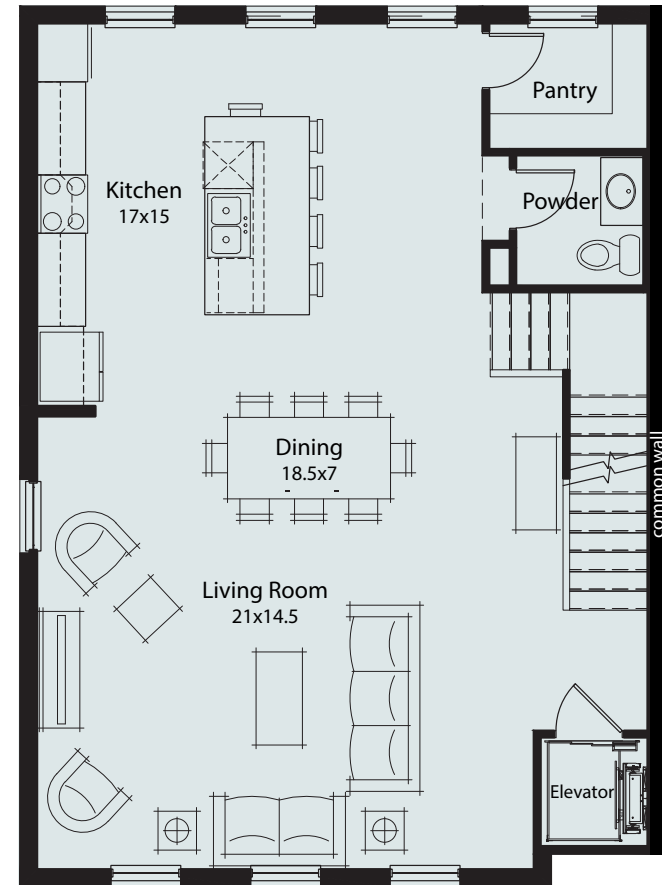
# BONAIRE PARK

208 South Cedar Street | Summerville, SC 29483

Unit F1-A | 3 Bed-2 Bath-2 Half Bath



1st FLOOR - 9ft ceilings



2nd FLOOR - 10ft ceilings

Heated Area - 2873 sqft

Garage Area - 430 sqft

Roof Deck Area - 710 sqft

Bonaire Park reserves the right to make modifications and changes to the information contained herein. Price and availability subject to change. Renderings, photos and sketches are representational and may not be totally accurate. Dimensions, sizes, specifications, layouts, views and materials are approximate and subject to change without notice.

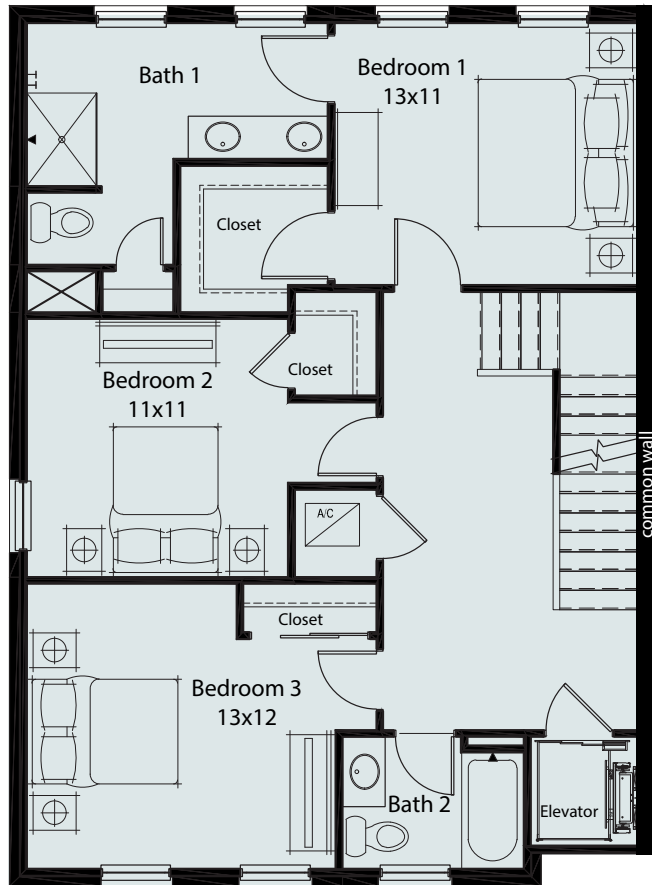
[Bonaire-park.com](http://Bonaire-park.com)

© South Cedar Development Associates, LLC 2025  
An affiliate of JJR Development, LLC  
All Rights Reserved

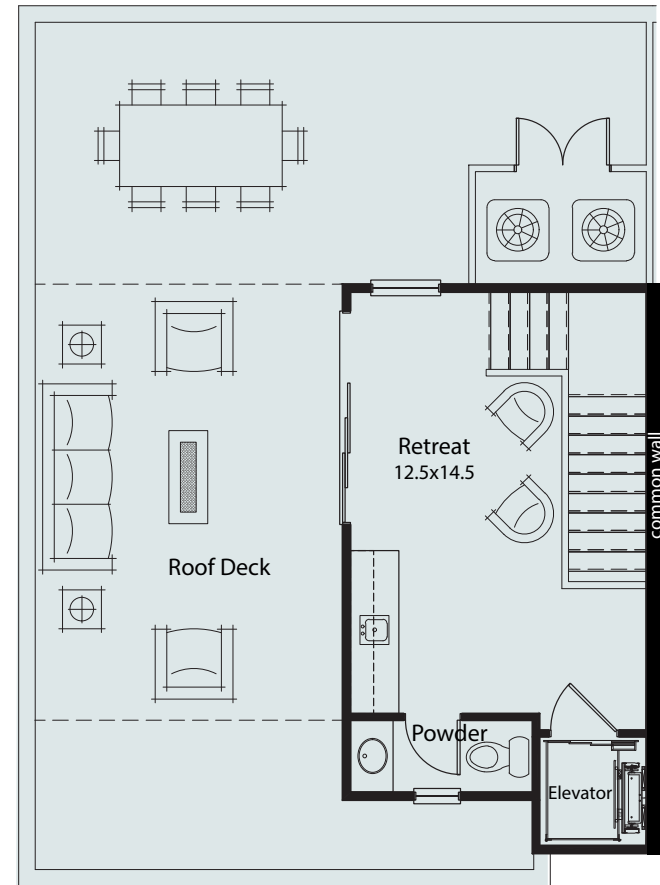
# BONAIRE PARK

208 South Cedar Street | Summerville, SC 29483

Unit F1-A | 3 Bed-2 Bath-2 Half Bath



3rd FLOOR - 9ft ceilings



PENTHOUSE - 9ft ceilings

Heated Area - 2873 sqft

Garage Area - 430 sqft

Roof Deck Area - 710 sqft

Bonaire Park reserves the right to make modifications and changes to the information contained herein. Price and availability subject to change. Renderings, photos and sketches are representational and may not be totally accurate. Dimensions, sizes, specifications, layouts, views and materials are approximate and subject to change without notice.

[Bonaire-park.com](http://Bonaire-park.com)

© South Cedar Development Associates, LLC 2025

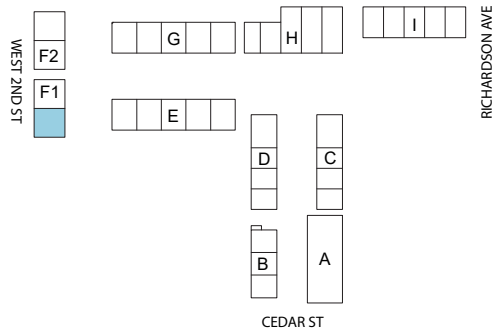
An affiliate of JJR Development, LLC

All Rights Reserved

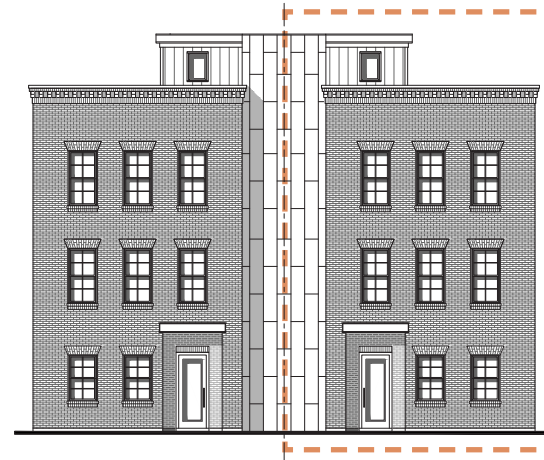
# BONAIRE PARK

208 South Cedar Street | Summerville, SC 29483

Unit F1-B | 3 Bed-2 Bath-2 Half Bath



SITE - KEY PLAN



BUILDING F1 - ELEVATION

Heated Area - 2887 sqft

Garage Area - 430 sqft

Roof Deck Area - 710 sqft

Bonaire Park reserves the right to make modifications and changes to the information contained herein. Price and availability subject to change. Renderings, photos and sketches are representational and may not be totally accurate. Dimensions, sizes, specifications, layouts, views and materials are approximate and subject to change without notice.

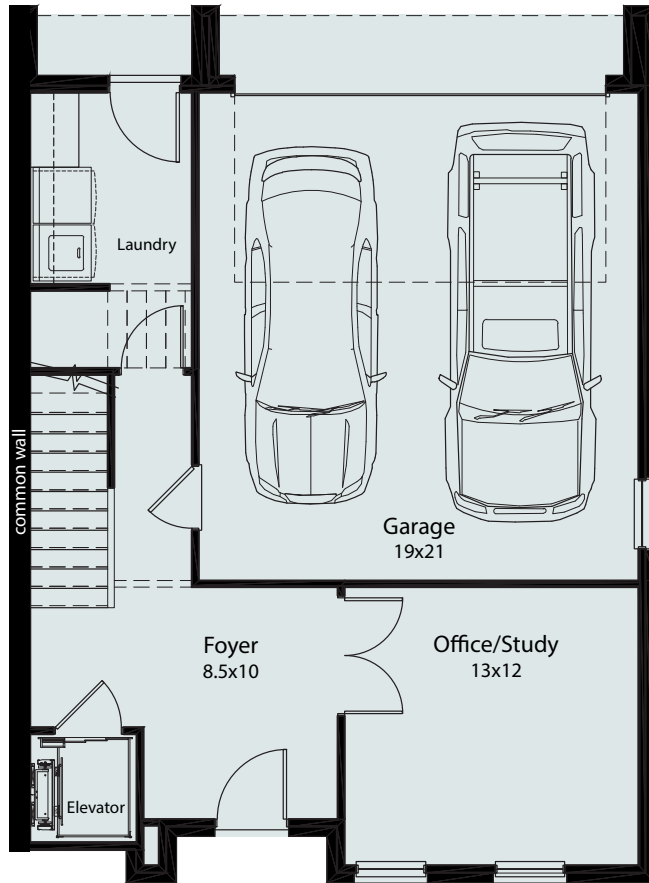
[Bonaire-park.com](http://Bonaire-park.com)

© South Cedar Development Associates, LLC 2025  
An affiliate of JJR Development, LLC  
All Rights Reserved

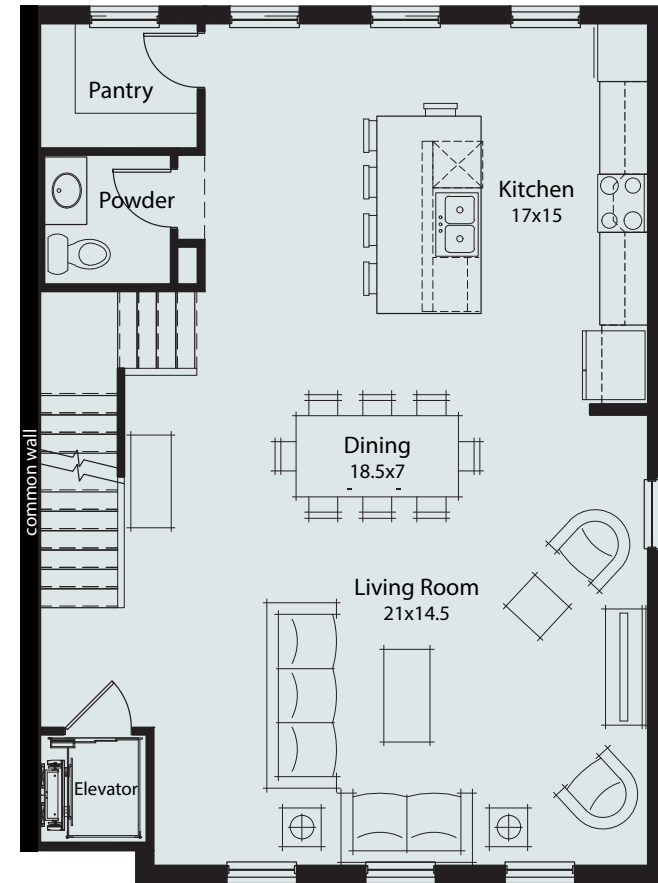
# BONAIRE PARK

208 South Cedar Street | Summerville, SC 29483

Unit F1-B | 3 Bed-2 Bath-2 Half Bath



1st FLOOR - 9ft ceilings



2nd FLOOR - 10ft ceilings

Heated Area - 2887 sqft

Garage Area - 430 sqft

Roof Deck Area - 710 sqft

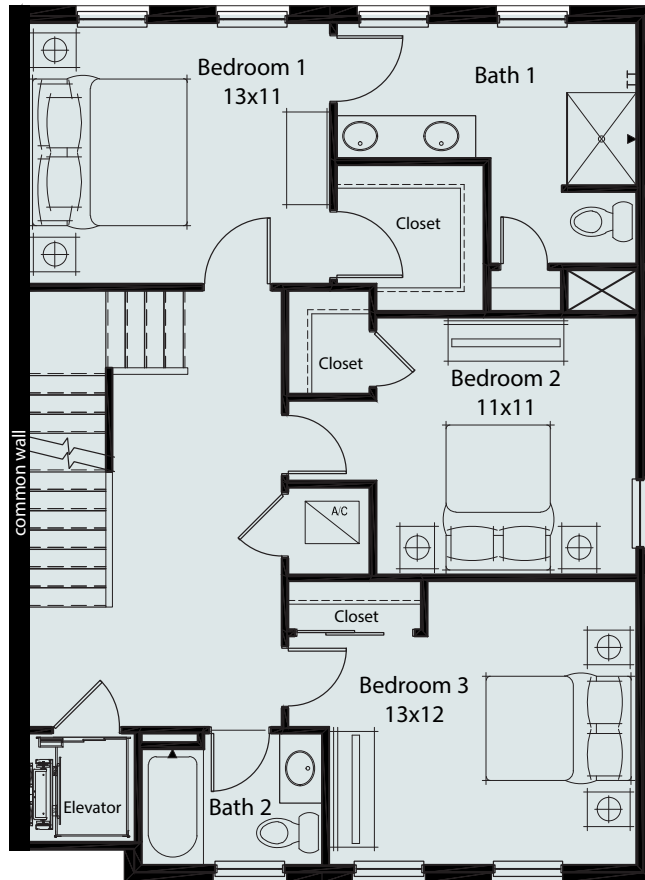
Bonaire Park reserves the right to make modifications and changes to the information contained herein. Price and availability subject to change. Renderings, photos and sketches are representational and may not be totally accurate. Dimensions, sizes, specifications, layouts, views and materials are approximate and subject to change without notice.

**Bonaire-park.com**  
© South Cedar Development Associates, LLC 2025  
An affiliate of JJR Development, LLC  
All Rights Reserved

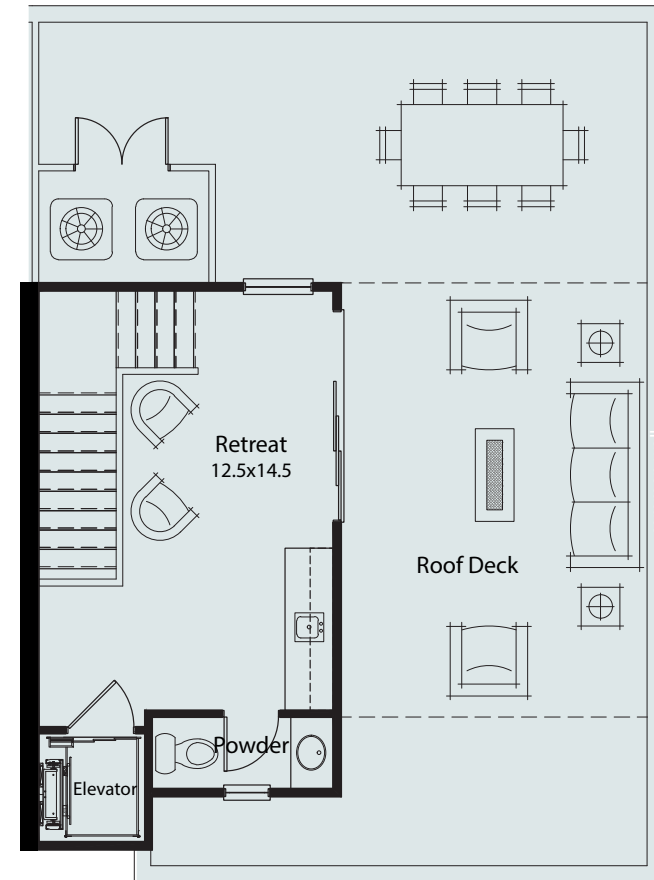
# BONAIRE PARK

208 South Cedar Street | Summerville, SC 29483

Unit F1-B | 3 Bed-2 Bath-2 Half Bath



3rd FLOOR - 9ft ceilings



PENTHOUSE - 9ft ceilings

Heated Area - 2887 sqft

Garage Area - 430 sqft

Roof Deck Area - 710 sqft

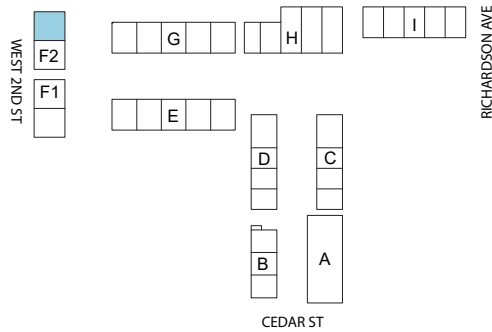
Bonaire Park reserves the right to make modifications and changes to the information contained herein. Price and availability subject to change. Renderings, photos and sketches are representational and may not be totally accurate. Dimensions, sizes, specifications, layouts, views and materials are approximate and subject to change without notice.

**Bonaire-park.com**  
© South Cedar Development Associates, LLC 2025  
An affiliate of JJR Development, LLC  
All Rights Reserved

# BONAIRE PARK

208 South Cedar Street | Summerville, SC 29483

Unit F2-A | 3 Bed-2 Bath-2 Half Bath



SITE - KEY PLAN



BUILDING F2 - ELEVATION

Heated Area - 2887 sqft

Garage Area - 430 sqft

Roof Deck Area - 710 sqft

Bonaire Park reserves the right to make modifications and changes to the information contained herein. Price and availability subject to change. Renderings, photos and sketches are representational and may not be totally accurate. Dimensions, sizes, specifications, layouts, views and materials are approximate and subject to change without notice.

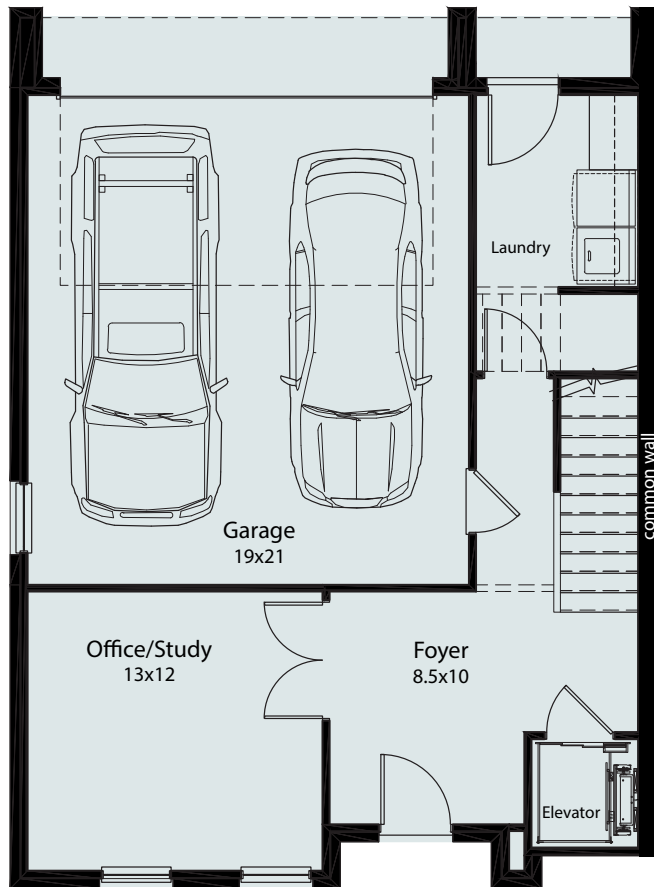
[Bonaire-park.com](http://Bonaire-park.com)

© South Cedar Development Associates, LLC 2025  
An affiliate of JJR Development, LLC  
All Rights Reserved

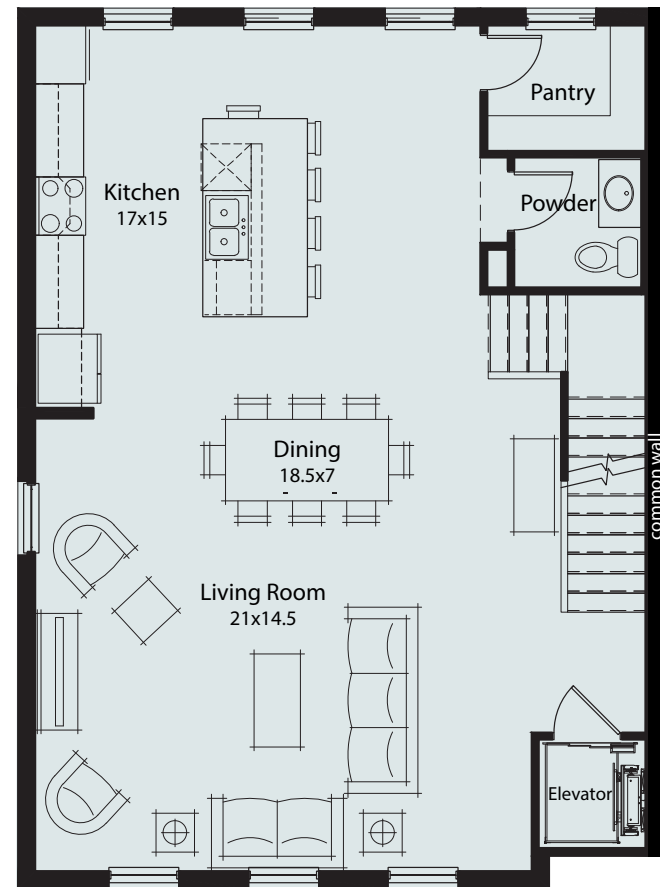
# BONAIRE PARK

208 South Cedar Street | Summerville, SC 29483

Unit F2-A | 3 Bed-2 Bath-2 Half Bath



1st FLOOR - 9ft ceilings



2nd FLOOR - 10ft ceilings

Heated Area - 2887 sqft

Garage Area - 430 sqft

Roof Deck Area - 710 sqft

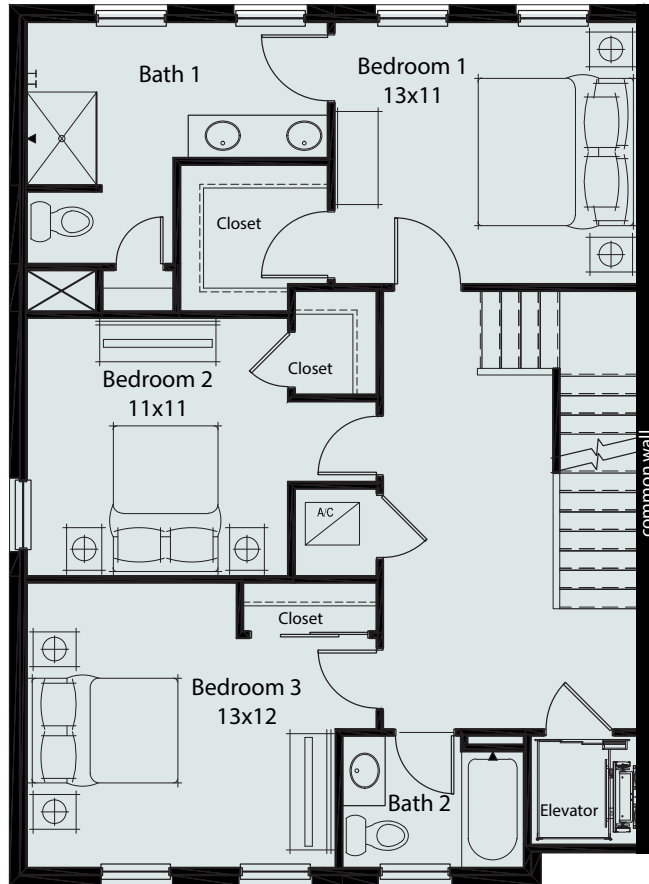
Bonaire Park reserves the right to make modifications and changes to the information contained herein. Price and availability subject to change. Renderings, photos and sketches are representational and may not be totally accurate. Dimensions, sizes, specifications, layouts, views and materials are approximate and subject to change without notice.

**Bonaire-park.com**  
© South Cedar Development Associates, LLC 2025  
An affiliate of JJR Development, LLC  
All Rights Reserved

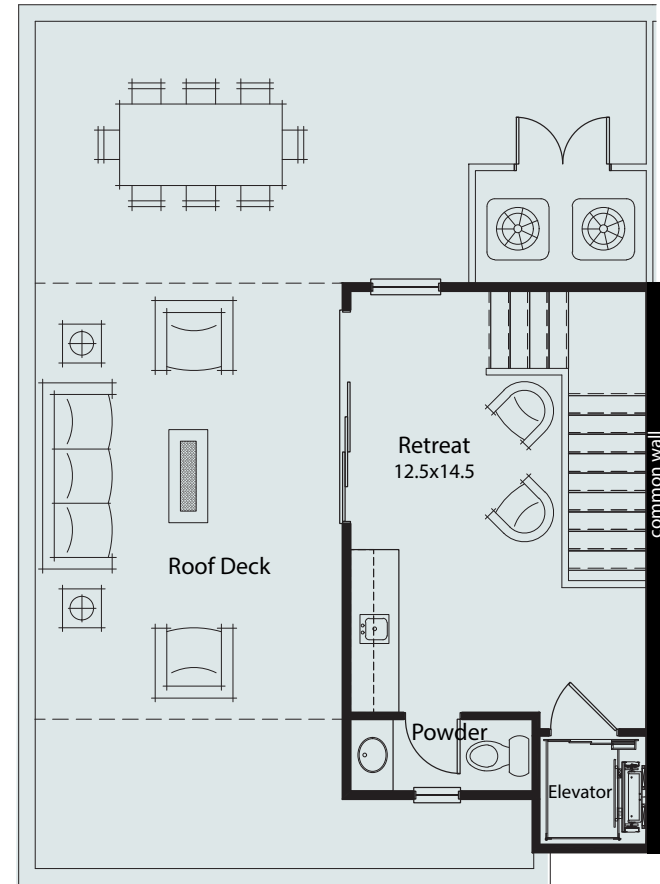
# BONAIRE PARK

208 South Cedar Street | Summerville, SC 29483

Unit F2-A | 3 Bed-2 Bath-2 Half Bath



3rd FLOOR - 9ft ceilings



PENTHOUSE - 9ft ceilings

Heated Area - 2887 sqft

Garage Area - 430 sqft

Roof Deck Area - 710 sqft

Bonaire Park reserves the right to make modifications and changes to the information contained herein. Price and availability subject to change. Renderings, photos and sketches are representational and may not be totally accurate. Dimensions, sizes, specifications, layouts, views and materials are approximate and subject to change without notice.

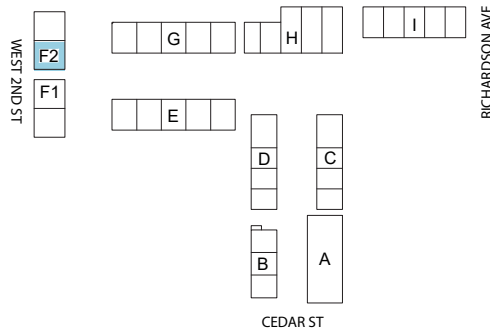
[Bonaire-park.com](http://Bonaire-park.com)

© South Cedar Development Associates, LLC 2025  
An affiliate of JJR Development, LLC  
All Rights Reserved

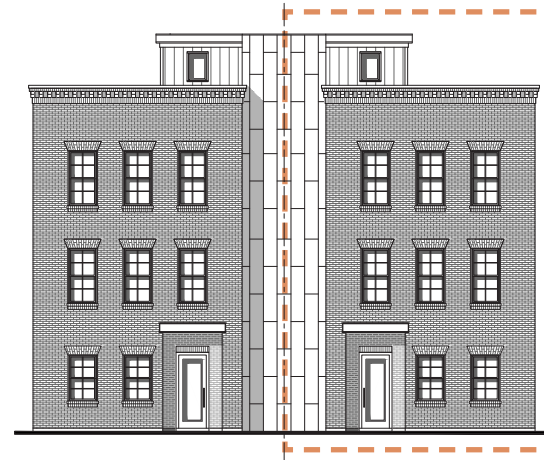
# BONAIRE PARK

208 South Cedar Street | Summerville, SC 29483

Unit F2-B | 3 Bed-2 Bath-2 Half Bath



SITE - KEY PLAN



BUILDING F2 - ELEVATION

Heated Area - 2874 sqft

Garage Area - 430 sqft

Roof Deck Area - 710 sqft

Bonaire Park reserves the right to make modifications and changes to the information contained herein. Price and availability subject to change. Renderings, photos and sketches are representational and may not be totally accurate. Dimensions, sizes, specifications, layouts, views and materials are approximate and subject to change without notice.

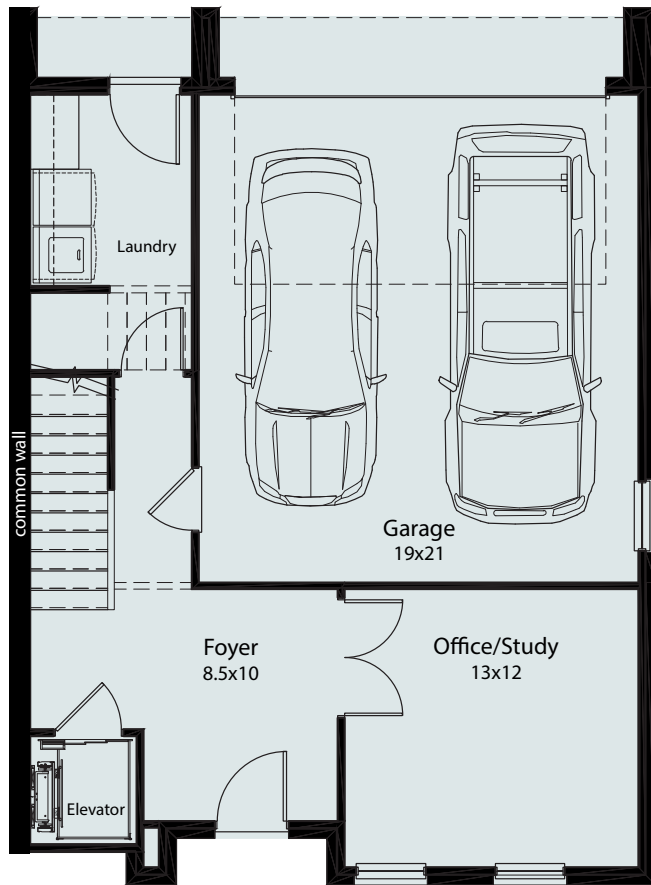
[Bonaire-park.com](http://Bonaire-park.com)

© South Cedar Development Associates, LLC 2025  
An affiliate of JJR Development, LLC  
All Rights Reserved

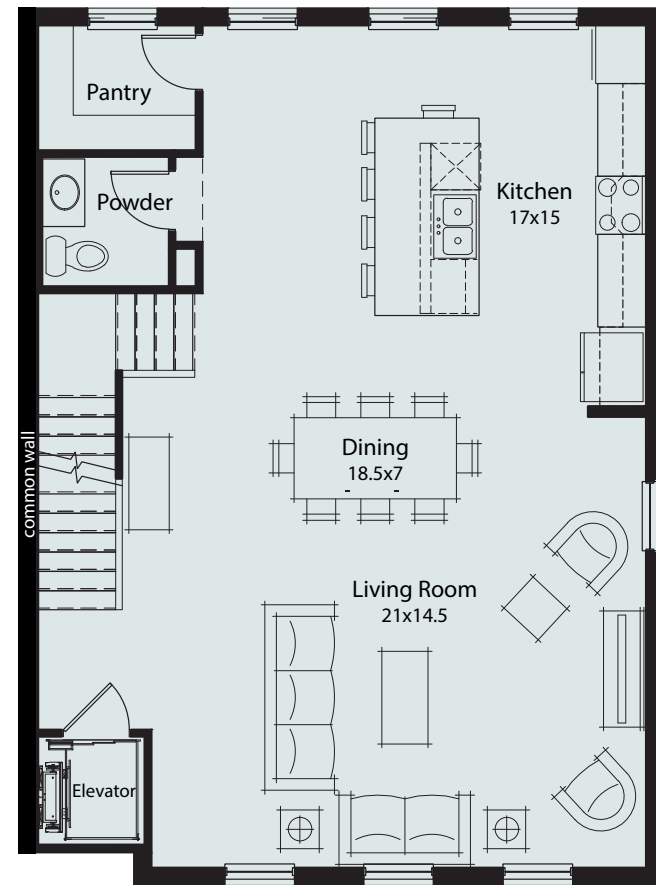
# BONAIRE PARK

208 South Cedar Street | Summerville, SC 29483

Unit F2-B | 3 Bed-2 Bath-2 Half Bath



1st FLOOR - 9ft ceilings



2nd FLOOR - 10ft ceilings

Heated Area - 2874 sqft

Garage Area - 430 sqft

Roof Deck Area - 710 sqft

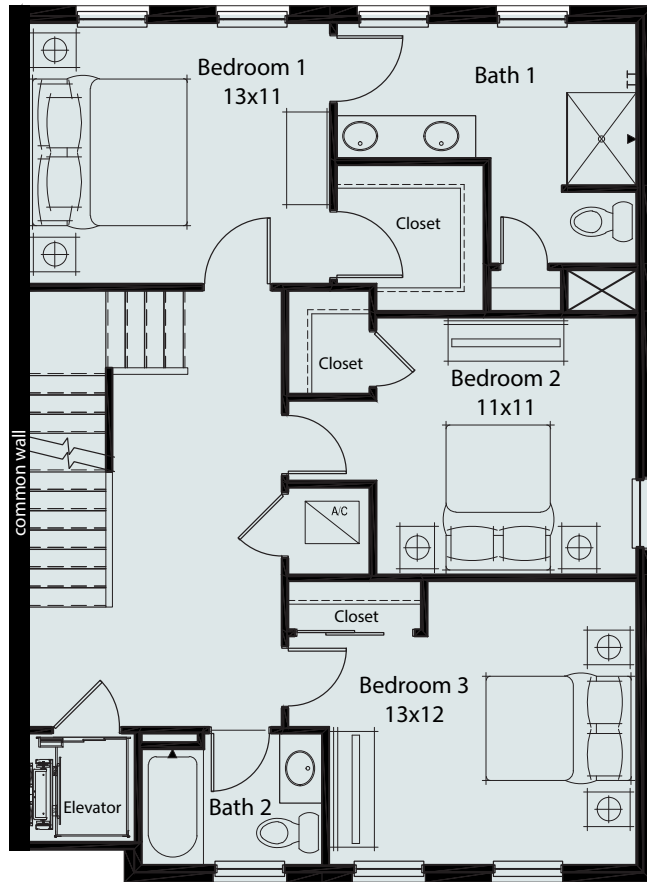
Bonaire Park reserves the right to make modifications and changes to the information contained herein. Price and availability subject to change. Renderings, photos and sketches are representational and may not be totally accurate. Dimensions, sizes, specifications, layouts, views and materials are approximate and subject to change without notice.

**Bonaire-park.com**  
© South Cedar Development Associates, LLC 2025  
An affiliate of JJR Development, LLC  
All Rights Reserved

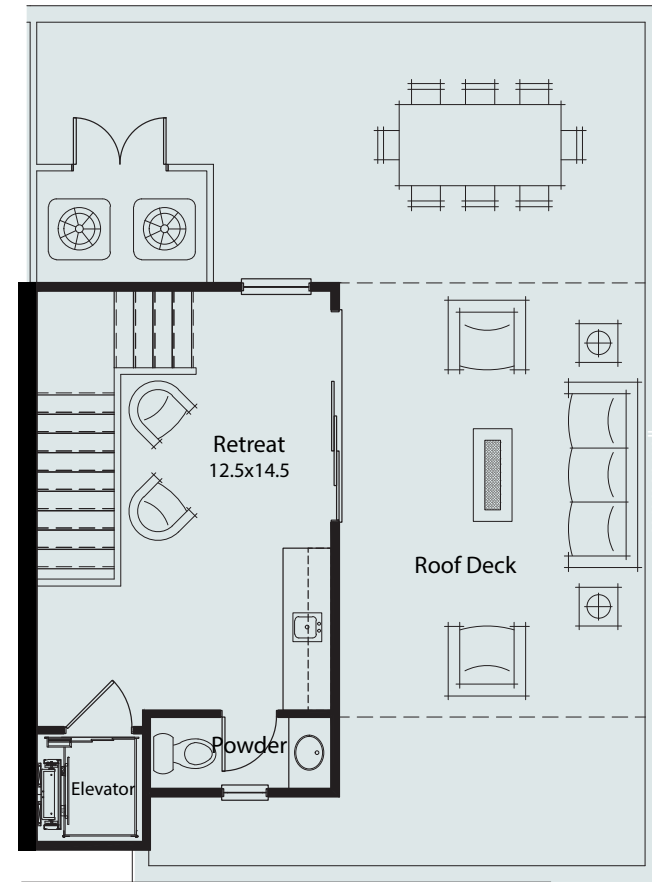
# BONAIRE PARK

208 South Cedar Street | Summerville, SC 29483

Unit F2-B | 3 Bed-2 Bath-2 Half Bath



3rd FLOOR - 9ft ceilings



PENTHOUSE - 9ft ceilings

Heated Area - 2874 sqft

Garage Area - 430 sqft

Roof Deck Area - 710 sqft

Bonaire Park reserves the right to make modifications and changes to the information contained herein. Price and availability subject to change. Renderings, photos and sketches are representational and may not be totally accurate. Dimensions, sizes, specifications, layouts, views and materials are approximate and subject to change without notice.

**Bonaire-park.com**  
© South Cedar Development Associates, LLC 2025  
An affiliate of JJR Development, LLC  
All Rights Reserved