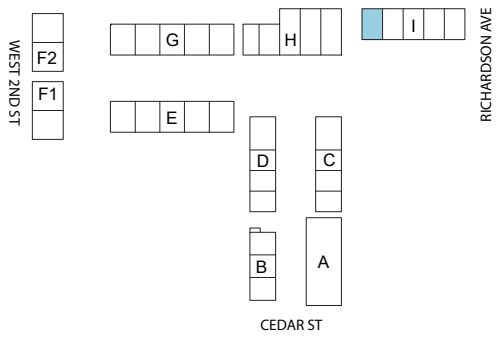


BONAIRE PARK

208 South Cedar Street | Summerville, SC 29483

Unit I1 | 2 Bed-2 Bath-2 Half Bath



SITE - KEY PLAN



BUILDING I - ELEVATION

Heated Area - 1882 sqft | Garage Area - 424 sqft | Roof Deck Area - 485 sqft

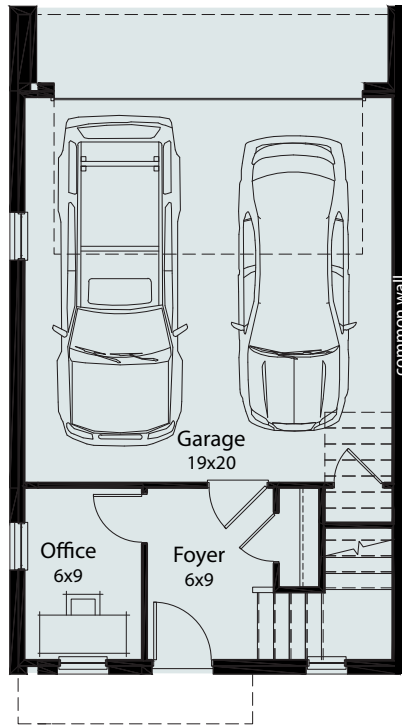
Bonaire Park reserves the right to make modifications and changes to the information contained herein. Price and availability subject to change. Renderings, photos and sketches are representational and may not be totally accurate. Dimensions, sizes, specifications, layouts, views and materials are approximate and subject to change without notice.

Bonaire-park.com
© South Cedar Development Associates, LLC 2025
An affiliate of JJR Development, LLC
All Rights Reserved

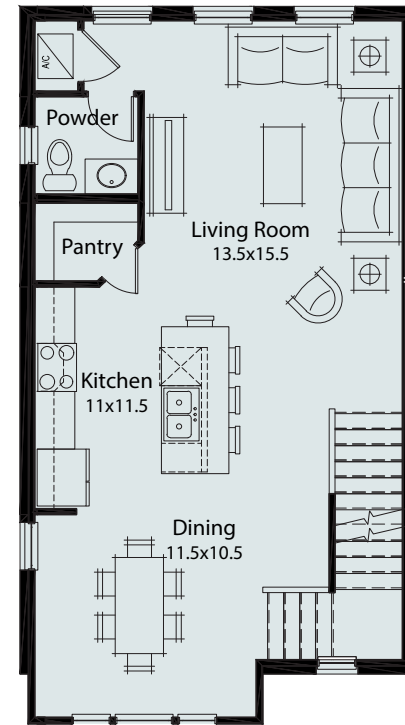
BONAIRE PARK

208 South Cedar Street | Summerville, SC 29483

Unit I1 | 2 Bed-2 Bath-2 Half Bath



1st FLOOR - 9ft ceilings



2nd FLOOR - 10ft ceilings

Heated Area - 1882 sqft

Garage Area - 424 sqft

Roof Deck Area - 485 sqft

Bonaire Park reserves the right to make modifications and changes to the information contained herein. Price and availability subject to change. Renderings, photos and sketches are representational and may not be totally accurate. Dimensions, sizes, specifications, layouts, views and materials are approximate and subject to change without notice.

Bonaire-park.com

© South Cedar Development Associates, LLC 2025

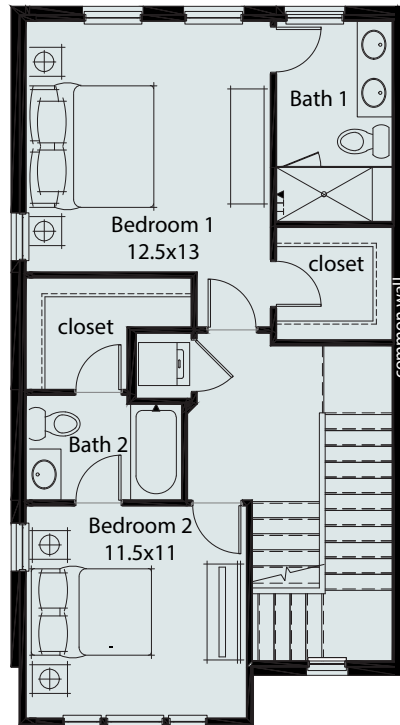
An affiliate of JJR Development, LLC

All Rights Reserved

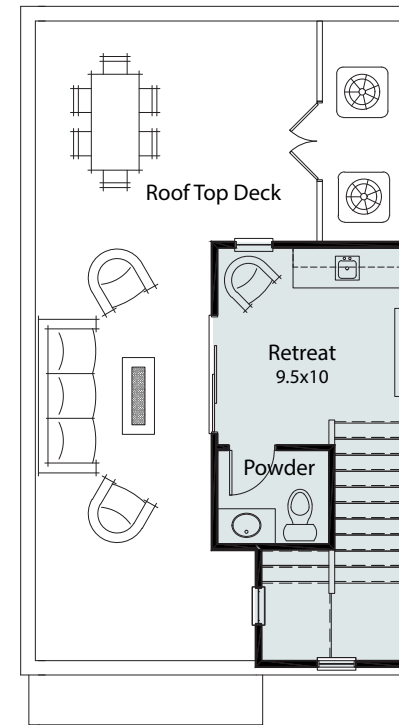
BONAIRE PARK

208 South Cedar Street | Summerville, SC 29483

Unit I1 | 2 Bed-2 Bath-2 Half Bath



3rd FLOOR - 9ft ceilings



PENTHOUSE - 9ft ceilings

Heated Area - 1882 sqft

Garage Area - 424 sqft

Roof Deck Area - 485 sqft

Bonaire Park reserves the right to make modifications and changes to the information contained herein. Price and availability subject to change. Renderings, photos and sketches are representational and may not be totally accurate. Dimensions, sizes, specifications, layouts, views and materials are approximate and subject to change without notice.

Bonaire-park.com

© South Cedar Development Associates, LLC 2025

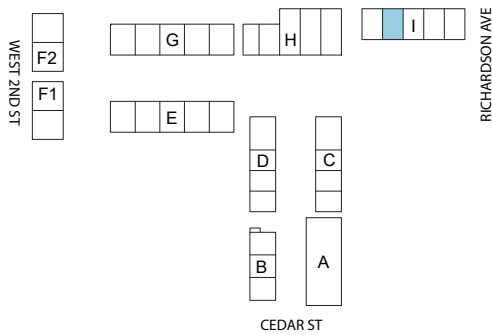
An affiliate of JJR Development, LLC

All Rights Reserved

BONAIRE PARK

208 South Cedar Street | Summerville, SC 29483

Unit I2 | 2 Bed-2 Bath-2 Half Bath



SITE - KEY PLAN



BUILDING I - ELEVATION

Heated Area - 1875 sqft

Garage Area - 418 sqft

Roof Deck Area - 477 sqft

Bonaire Park reserves the right to make modifications and changes to the information contained herein. Price and availability subject to change. Renderings, photos and sketches are representational and may not be totally accurate. Dimensions, sizes, specifications, layouts, views and materials are approximate and subject to change without notice.

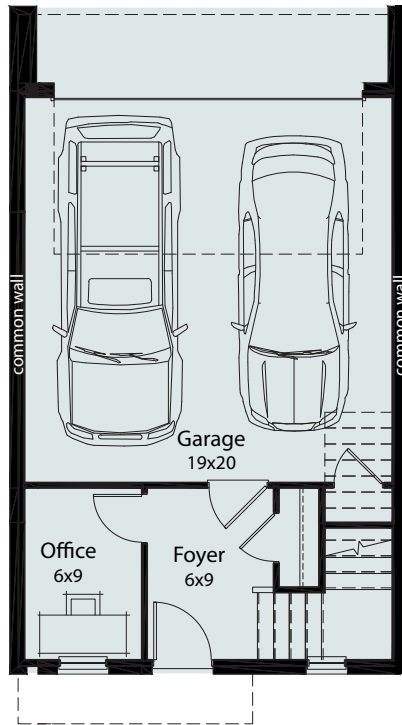
Bonaire-park.com

© South Cedar Development Associates, LLC 2025
An affiliate of JJR Development, LLC
All Rights Reserved

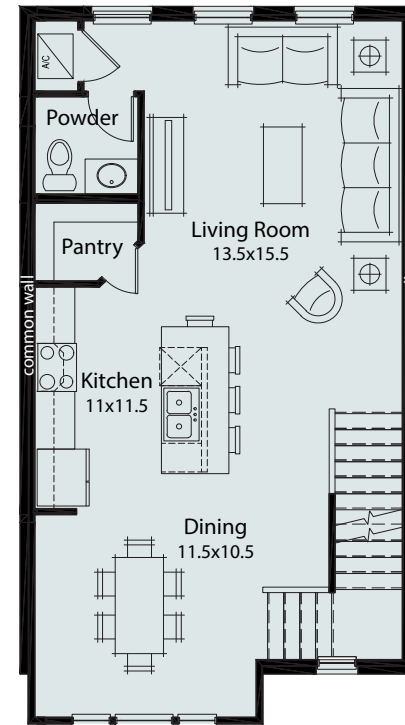
BONAIRE PARK

208 South Cedar Street | Summerville, SC 29483

Unit 12 | 2 Bed-2 Bath-2 Half Bath



1st FLOOR - 9ft ceilings



2nd FLOOR - 10ft ceilings

Heated Area - 1875 sqft

Garage Area - 418 sqft

Roof Deck Area - 477 sqft

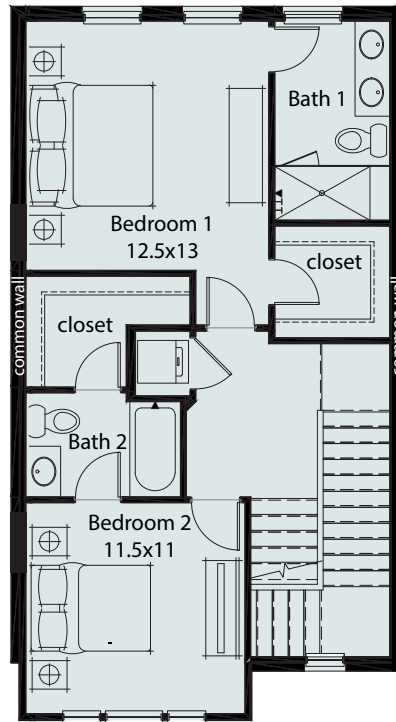
Bonaire Park reserves the right to make modifications and changes to the information contained herein. Price and availability subject to change. Renderings, photos and sketches are representational and may not be totally accurate. Dimensions, sizes, specifications, layouts, views and materials are approximate and subject to change without notice.

Bonaire-park.com
© South Cedar Development Associates, LLC 2025
An affiliate of JJR Development, LLC
All Rights Reserved

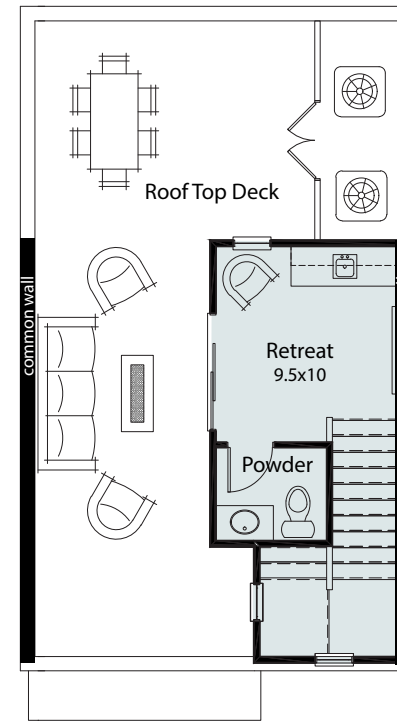
BONAIRE PARK

208 South Cedar Street | Summerville, SC 29483

Unit 12 | 2 Bed-2 Bath-2 Half Bath



3rd FLOOR - 9ft ceilings



PENTHOUSE - 9ft ceilings

Heated Area - 1875 sqft

Garage Area - 418 sqft

Roof Deck Area - 477 sqft

Bonaire Park reserves the right to make modifications and changes to the information contained herein. Price and availability subject to change. Renderings, photos and sketches are representational and may not be totally accurate. Dimensions, sizes, specifications, layouts, views and materials are approximate and subject to change without notice.

Bonaire-park.com

© South Cedar Development Associates, LLC 2025

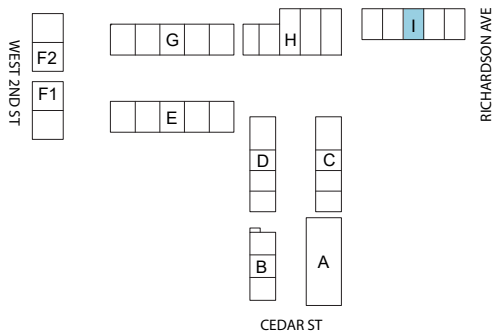
An affiliate of JJR Development, LLC

All Rights Reserved

BONAIRE PARK

208 South Cedar Street | Summerville, SC 29483

Unit 13 | 2 Bed-2 Bath-2 Half Bath



SITE - KEY PLAN



BUILDING I - ELEVATION

Heated Area - 1875 sqft

Garage Area - 418 sqft

Roof Deck Area - 477 sqft

Bonaire Park reserves the right to make modifications and changes to the information contained herein. Price and availability subject to change. Renderings, photos and sketches are representational and may not be totally accurate. Dimensions, sizes, specifications, layouts, views and materials are approximate and subject to change without notice.

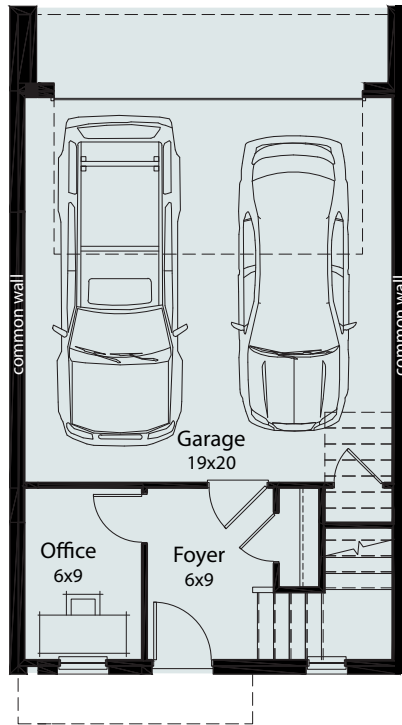
Bonaire-park.com

© South Cedar Development Associates, LLC 2025
An affiliate of JJR Development, LLC
All Rights Reserved

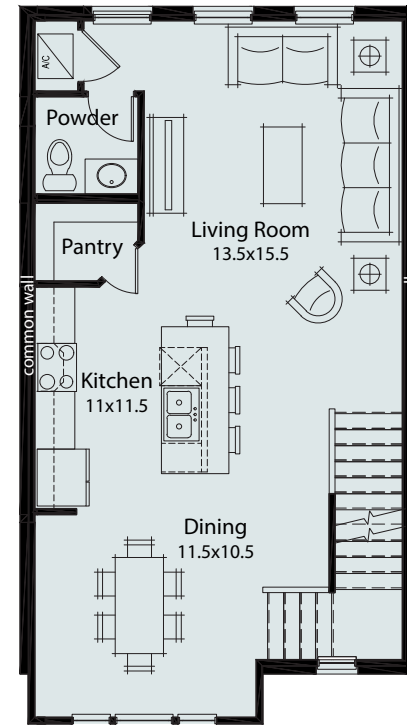
BONAIRE PARK

208 South Cedar Street | Summerville, SC 29483

Unit 13 | 2 Bed-2 Bath-2 Half Bath



1st FLOOR - 9ft ceilings



2nd FLOOR - 10ft ceilings

Heated Area - 1875 sqft

Garage Area - 418 sqft

Roof Deck Area - 477 sqft

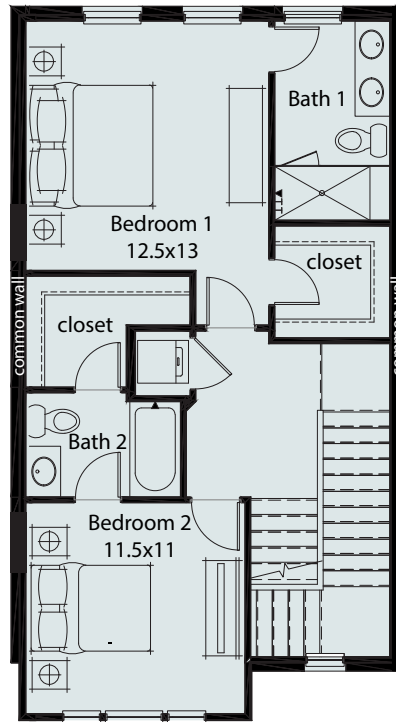
Bonaire Park reserves the right to make modifications and changes to the information contained herein. Price and availability subject to change. Renderings, photos and sketches are representational and may not be totally accurate. Dimensions, sizes, specifications, layouts, views and materials are approximate and subject to change without notice.

Bonaire-park.com
© South Cedar Development Associates, LLC 2025
An affiliate of JJR Development, LLC
All Rights Reserved

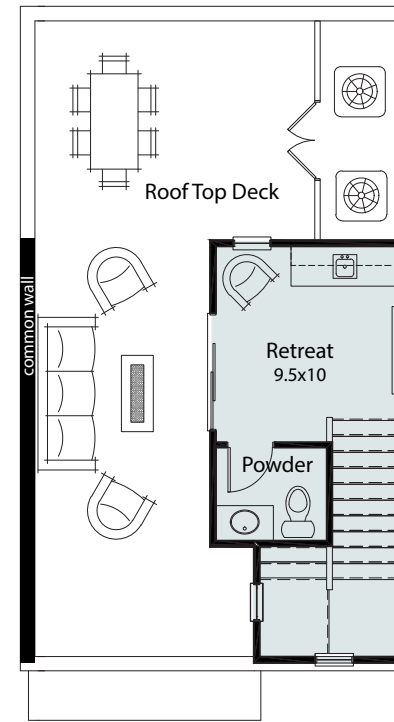
BONAIRE PARK

208 South Cedar Street | Summerville, SC 29483

Unit 13 | 2 Bed-2 Bath-2 Half Bath



3rd FLOOR - 9ft ceilings



PENTHOUSE - 9ft ceilings

Heated Area - 1875 sqft

Garage Area - 418 sqft

Roof Deck Area - 477 sqft

Bonaire Park reserves the right to make modifications and changes to the information contained herein. Price and availability subject to change. Renderings, photos and sketches are representational and may not be totally accurate. Dimensions, sizes, specifications, layouts, views and materials are approximate and subject to change without notice.

Bonaire-park.com

© South Cedar Development Associates, LLC 2025

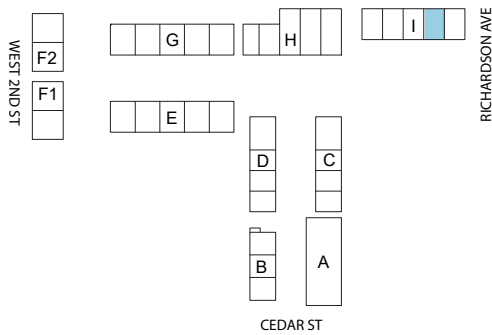
An affiliate of JJR Development, LLC

All Rights Reserved

BONAIRE PARK

208 South Cedar Street | Summerville, SC 29483

Unit I4 | 2 Bed-2 Bath-2 Half Bath



SITE - KEY PLAN



BUILDING I - ELEVATION

Heated Area - 1875 sqft

Garage Area - 418 sqft

Roof Deck Area - 477 sqft

Bonaire Park reserves the right to make modifications and changes to the information contained herein. Price and availability subject to change. Renderings, photos and sketches are representational and may not be totally accurate. Dimensions, sizes, specifications, layouts, views and materials are approximate and subject to change without notice.

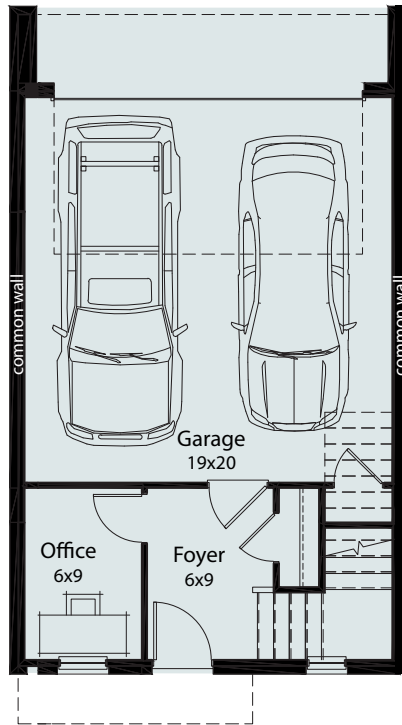
Bonaire-park.com

© South Cedar Development Associates, LLC 2025
An affiliate of JJR Development, LLC
All Rights Reserved

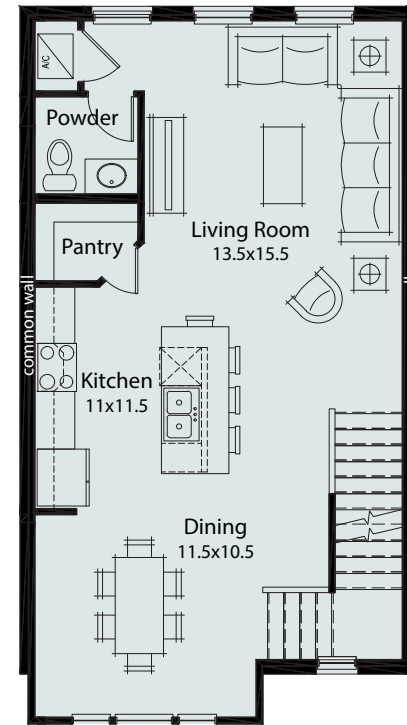
BONAIRE PARK

208 South Cedar Street | Summerville, SC 29483

Unit I4 | 2 Bed-2 Bath-2 Half Bath



1st FLOOR - 9ft ceilings



2nd FLOOR - 10ft ceilings

Heated Area - 1875 sqft

Garage Area - 418 sqft

Roof Deck Area - 477 sqft

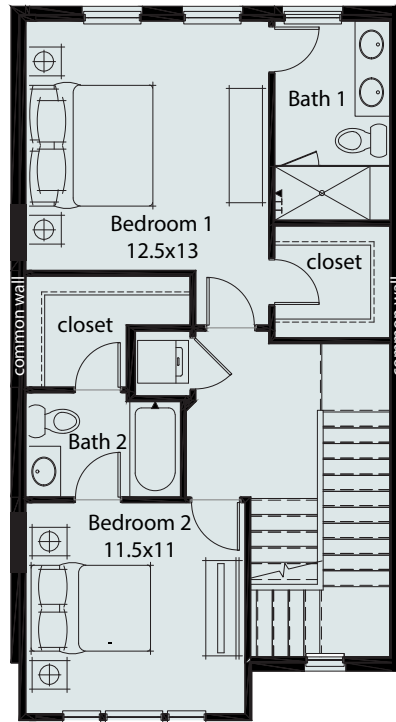
Bonaire Park reserves the right to make modifications and changes to the information contained herein. Price and availability subject to change. Renderings, photos and sketches are representational and may not be totally accurate. Dimensions, sizes, specifications, layouts, views and materials are approximate and subject to change without notice.

Bonaire-park.com
© South Cedar Development Associates, LLC 2025
An affiliate of JJR Development, LLC
All Rights Reserved

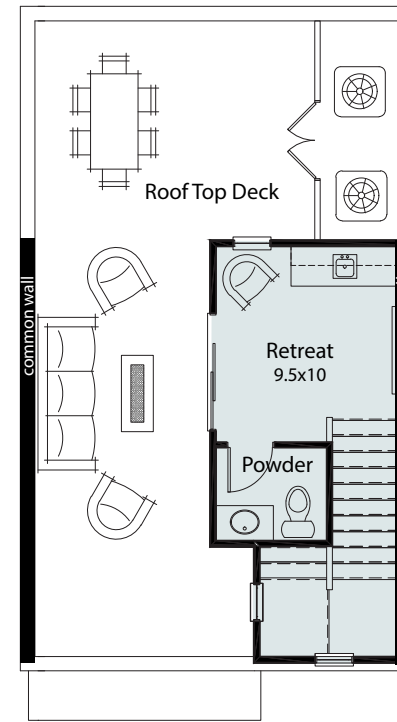
BONAIRE PARK

208 South Cedar Street | Summerville, SC 29483

Unit I4 | 2 Bed-2 Bath-2 Half Bath



3rd FLOOR - 9ft ceilings



PENTHOUSE - 9ft ceilings

Heated Area - 1875 sqft

Garage Area - 418 sqft

Roof Deck Area - 477 sqft

Bonaire Park reserves the right to make modifications and changes to the information contained herein. Price and availability subject to change. Renderings, photos and sketches are representational and may not be totally accurate. Dimensions, sizes, specifications, layouts, views and materials are approximate and subject to change without notice.

Bonaire-park.com

© South Cedar Development Associates, LLC 2025

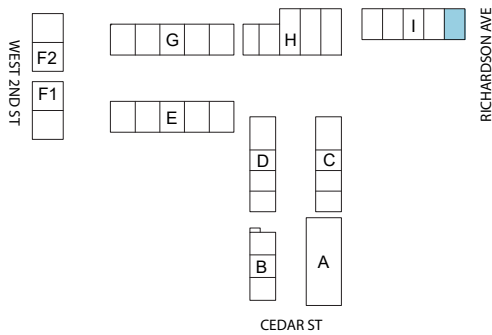
An affiliate of JJR Development, LLC

All Rights Reserved

BONAIRE PARK

208 South Cedar Street | Summerville, SC 29483

Unit 15 | 2 Bed-2 Bath-3 Half Bath



SITE - KEY PLAN



BUILDING I - ELEVATION

Heated Area - 2755 sqft

Garage Area - 412 sqft

Roof Deck Area - 508 sqft

Bonaire Park reserves the right to make modifications and changes to the information contained herein. Price and availability subject to change. Renderings, photos and sketches are representational and may not be totally accurate. Dimensions, sizes, specifications, layouts, views and materials are approximate and subject to change without notice.

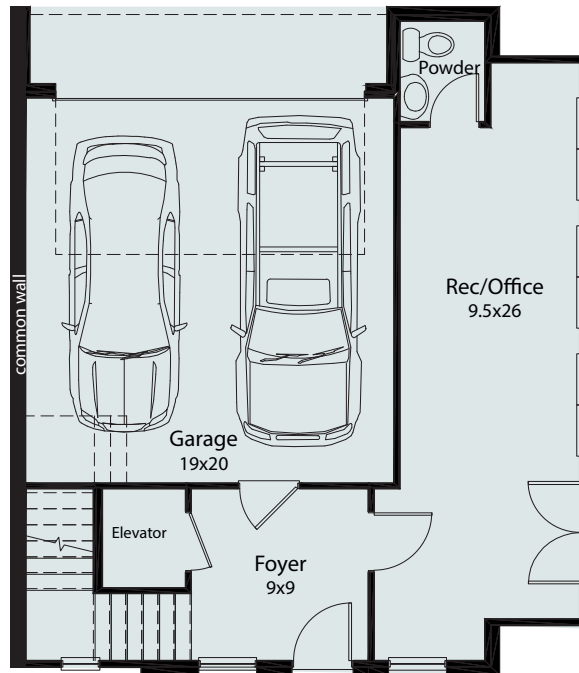
Bonaire-park.com

© South Cedar Development Associates, LLC 2025
An affiliate of JJR Development, LLC
All Rights Reserved

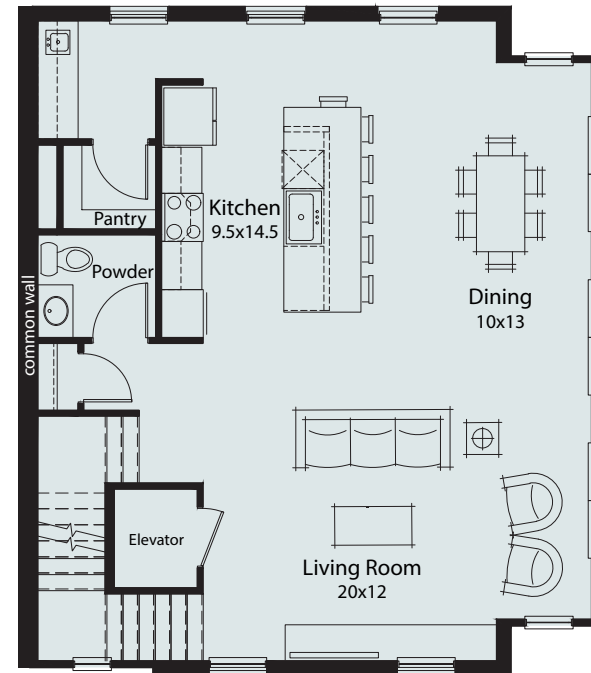
BONAIRE PARK

208 South Cedar Street | Summerville, SC 29483

Unit 15 | 2 Bed-2 Bath-3 Half Bath



1st FLOOR - 9ft ceilings



2nd FLOOR - 10ft ceilings

Heated Area - 2755 sqft

Garage Area - 412 sqft

Roof Deck Area - 508 sqft

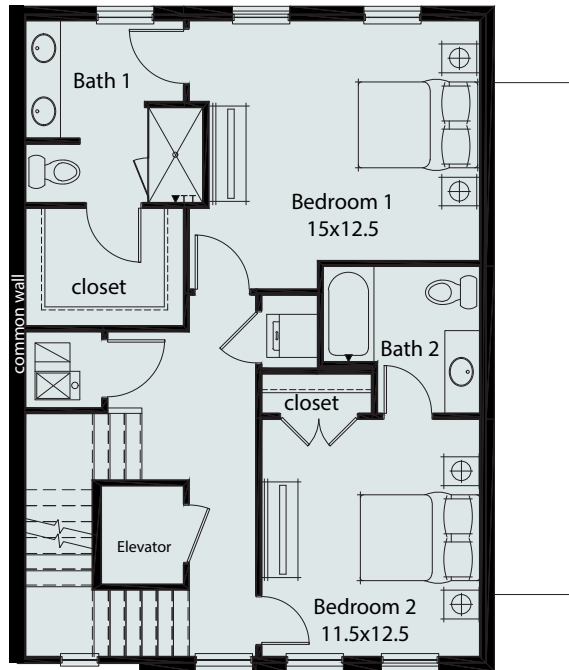
Bonaire Park reserves the right to make modifications and changes to the information contained herein. Price and availability subject to change. Renderings, photos and sketches are representational and may not be totally accurate. Dimensions, sizes, specifications, layouts, views and materials are approximate and subject to change without notice.

Bonaire-park.com
© South Cedar Development Associates, LLC 2025
An affiliate of JJR Development, LLC
All Rights Reserved

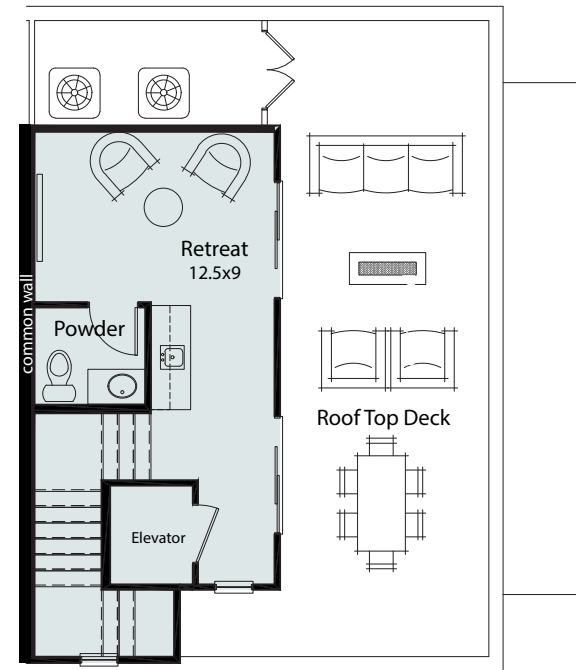
BONAIRE PARK

208 South Cedar Street | Summerville, SC 29483

Unit 15 | 2 Bed-2 Bath-3 Half Bath



3rd FLOOR - 9ft ceilings



PENTHOUSE - 9ft ceilings

Heated Area - 2755 sqft

Garage Area - 412 sqft

Roof Deck Area - 508 sqft

Bonaire Park reserves the right to make modifications and changes to the information contained herein. Price and availability subject to change. Renderings, photos and sketches are representational and may not be totally accurate. Dimensions, sizes, specifications, layouts, views and materials are approximate and subject to change without notice.

Bonaire-park.com
© South Cedar Development Associates, LLC 2025
An affiliate of JJR Development, LLC
All Rights Reserved